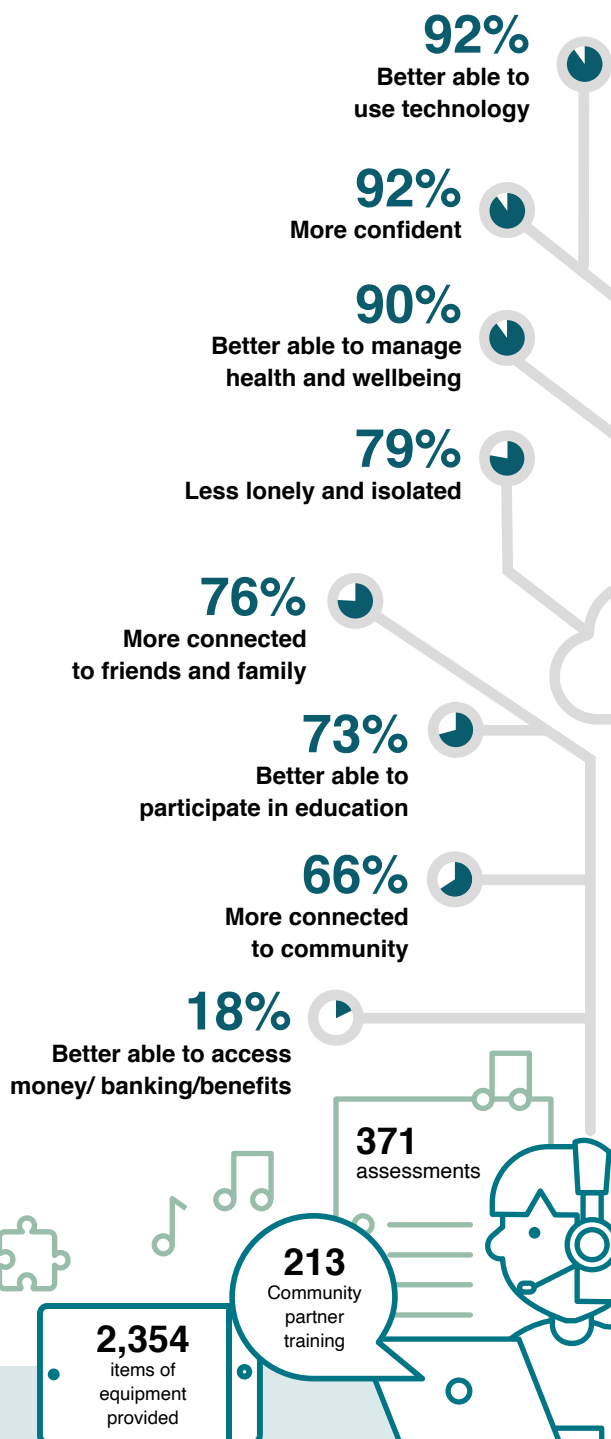


AbilityNet was lead accessibility partner for the project providing specialist advice and support to community partners and beneficiaries.

## Our impact on Individuals

"It's given me more independence. It's allowed me to keep my interests and access them in a different way."

JANET GROVES, DIGITAL LIFELINE BENEFICIARY, WORCESTERSHIRE



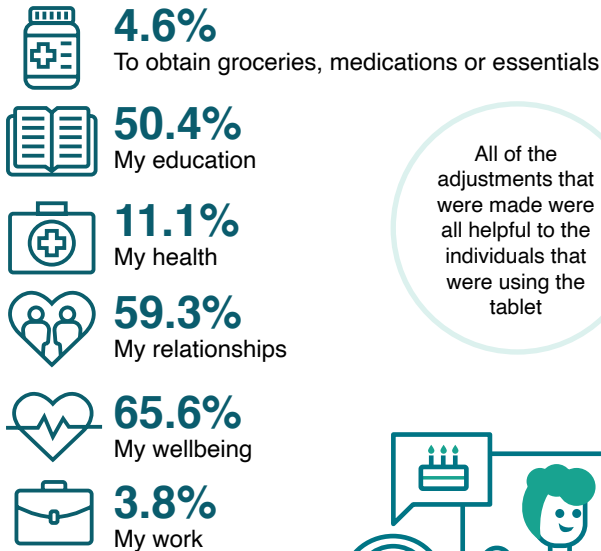
## Our impact on Organisations

"Digital inclusion will be an ongoing priority for our organisation, and a large proportion of our participants have additional support needs, so we would love to continue engaging with AbilityNet. We will certainly use the website resources."



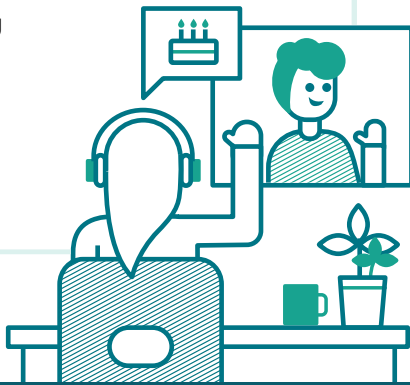
“  
Tablets are built into people's routine now.. it's something they'll continue for the rest of their lives... everyone seems to be enjoying them.”  
COMMUNITY PARTNER

## Goals

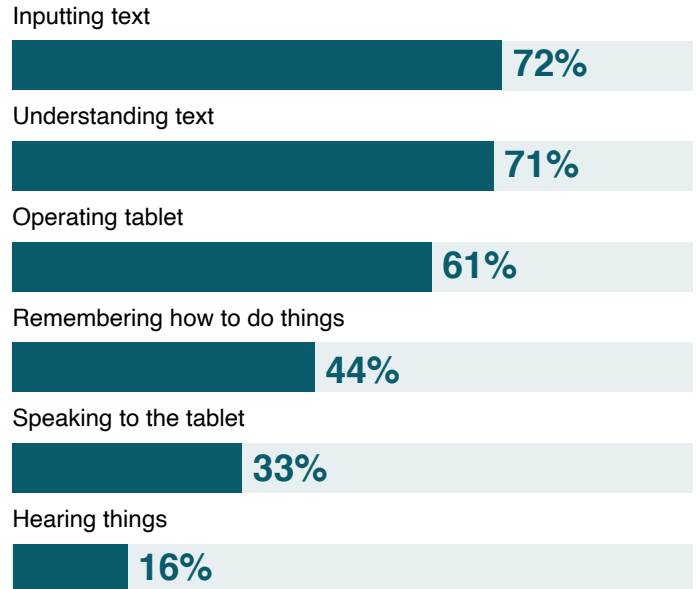


All of the adjustments that were made were all helpful to the individuals that were using the tablet

The ability to video-conference gifted a birthday chat with a loved one



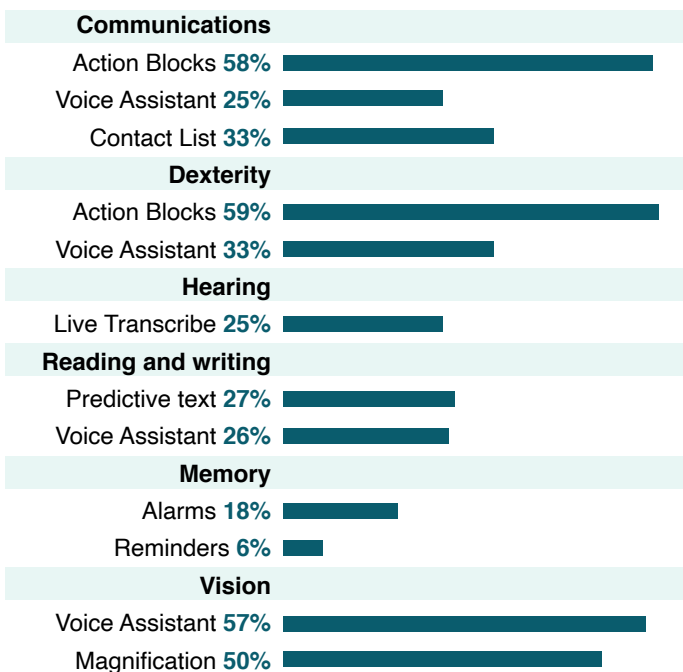
## Barriers



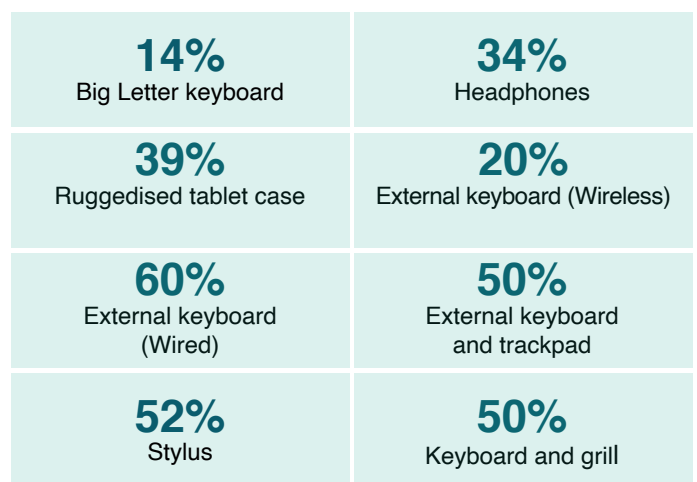
**58%** of assessed beneficiaries recorded multiple disabilities

## Top Adjustments

These percentages reflect the proportion of people who have already implemented recommended adjustments. The full report shows that there is a large appetite from respondents to make future assistive modifications and learn other skills.



## Assistive Hardware

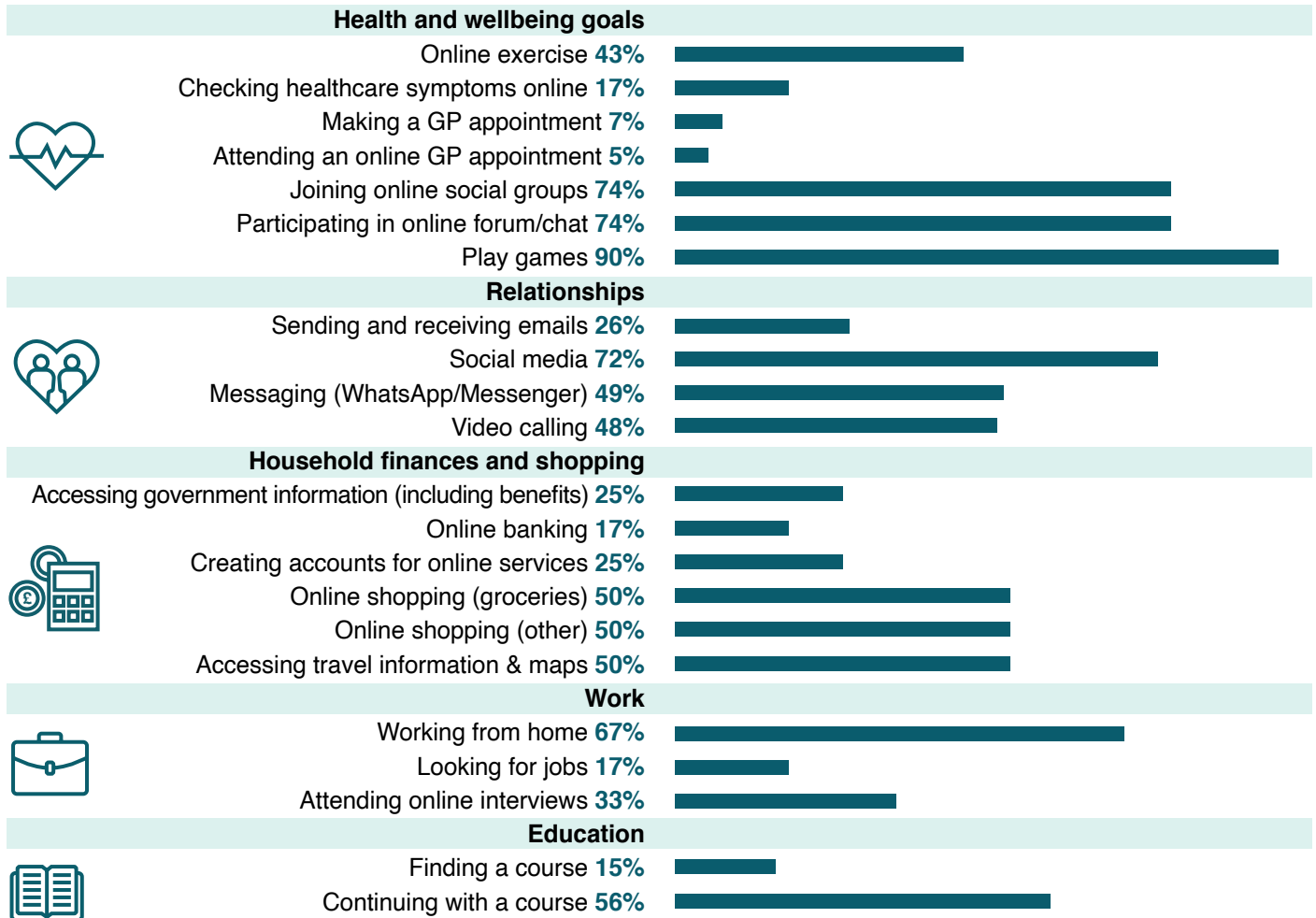


## Other popular recommendations

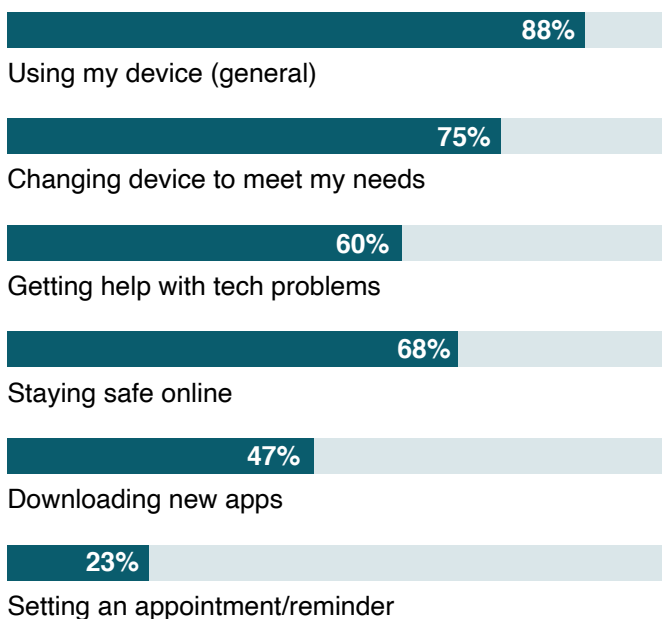
- 26 people** Gooseneck tablet holder
- 5 people** Be My Eyes (VI)
- 26 people** Symbo talk (communication)
- 48 people** Colouring App
- 33 people** Jigsaw
- 30 people** Number App
- 15 people** Phonics and spelling app
- 18 people** Photos App
- 7 people** Stories
- 40 people** Games

“Personalised recommendations meant people didn't all get the same things - they all got what they actually needed”  
**COMMUNITY PARTNER**

## Early goals achieved



## Using my device



## Buddy map

Map shows location of people supported and volunteer buddies assigned for ongoing support.

